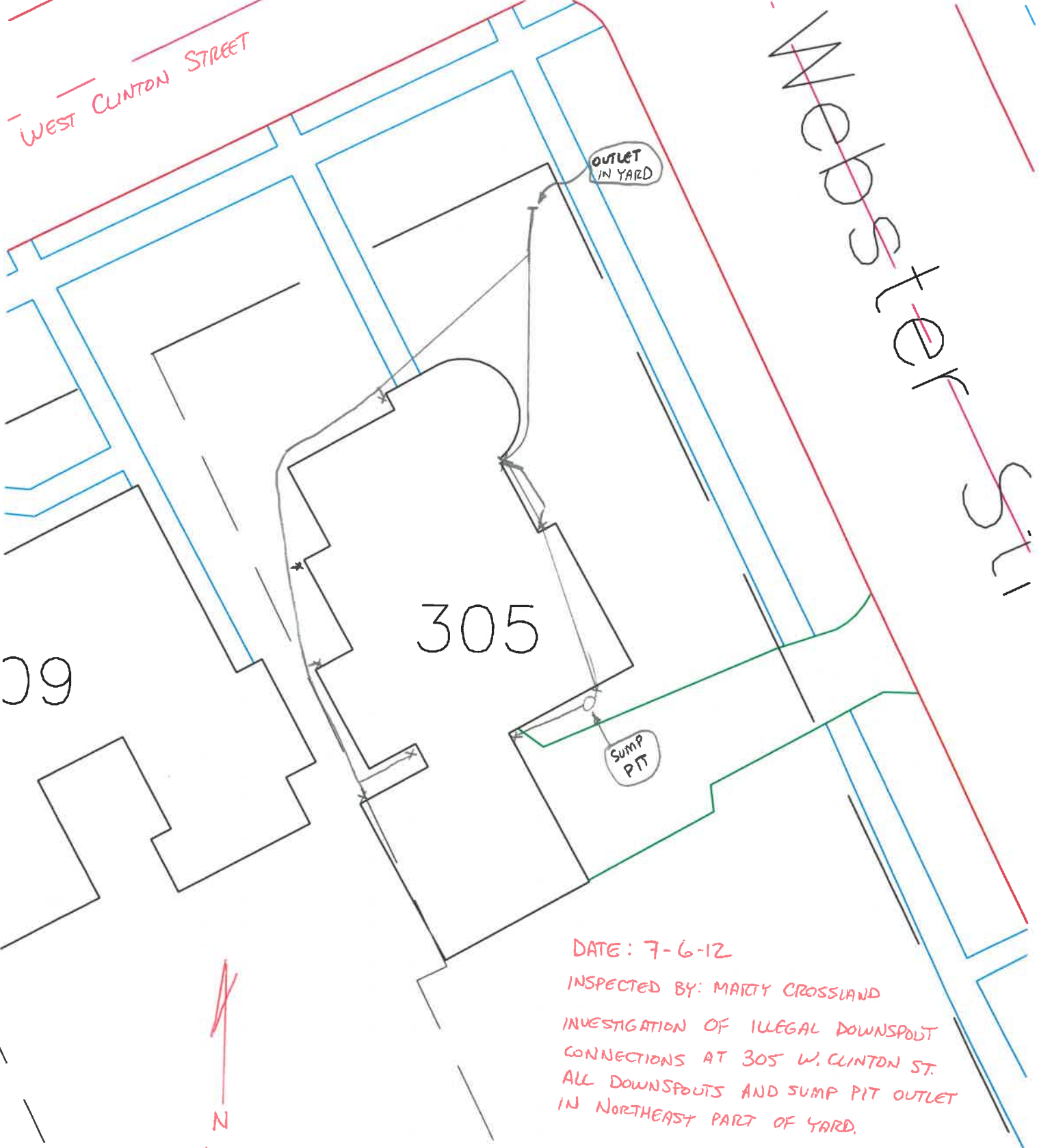


WEST CLINTON STREET

Mepposter St



09

305

OUTLET IN YARD

SUMP PIT

N
1"=20'

DATE: 7-6-12
INSPECTED BY: MARTY CROSSLAND
INVESTIGATION OF ILLEGAL DOWNSPOUT
CONNECTIONS AT 305 W. CLINTON ST.
ALL DOWNSPOUTS AND SUMP PIT OUTLET
IN NORTHEAST PART OF YARD.

SCANNED